

3. The following figures show histograms for household income in 1999 for Washington, D.C. and Massachusetts. Note that 4.7% of the households in Washington, D.C. had income over \$200,000 and 3.5% of the households in Massachusetts had income over \$200,000. Also, 248,590 households were surveyed in Washington, D.C. and 2,444,588 households were surveyed in Massachusetts. (Data is from the 2000 US Census.)

- (a) Did Washington, D.C., or Massachusetts have a higher percentage of low income people (income less than \$25,000)? Explain your answer.
- (b) Were there more low income households in Washington, D.C. or in Massachusetts? Explain your answer?

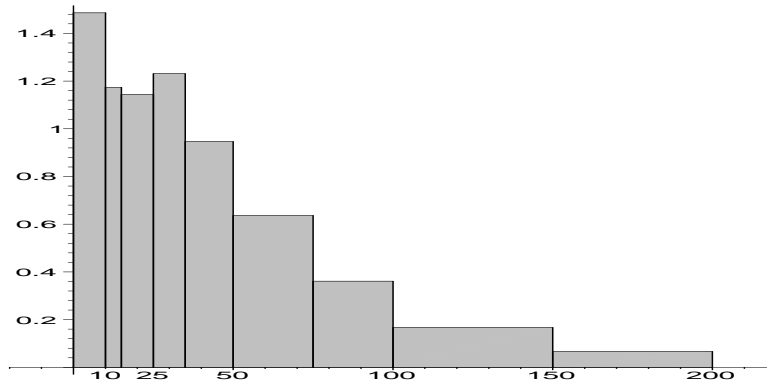


Figure 1: Washington, D.C. Household Income, 1999

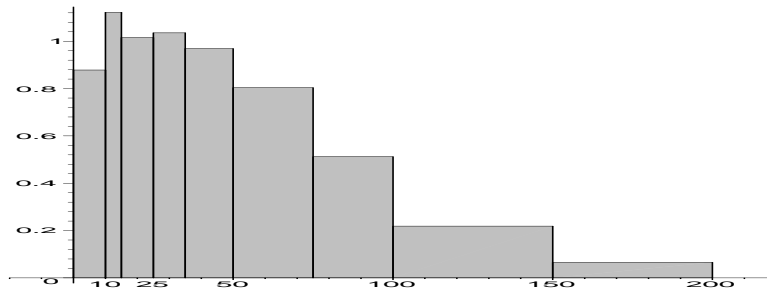


Figure 2: Massachusetts Household Income, 1999